

Introduction

McAfee Total Protection for Endpoint is an anti-virus agent that will self-register with campus McAfee servers and execute policies assigned by server administrators to help protect your computer. When you install McAfee Total Protection for Endpoint for Georgia State-owned computers, the campus McAfee servers will install anti-virus and anti-spyware software as well as perform daily updates on the installed software. During the installation process, McAfee will uninstall Symantec Anti-Virus software, if it is installed. McAfee will not remove any other security software on the computer.

The installation works in the background, so you may continue to work on other tasks. Please be patient. The installation process may take **up to an hour or more**, but you may continue working on your computer while the program removes Symantec Anti-Virus and installs McAfee VirusScan. The computer **will not** reboot during this installation. When the installation is complete, we recommend you perform a system scan to ensure your computer is safe from any security threats.

Requirements

Operating System: Microsoft Windows XP, Windows Vista, or Windows 7.

NOTE: For Windows XP, you must run the install application while logged into a user account with administrative rights. Either right-click on the installer application and select "Run as..." and choose administrator or log out of the computer and log back in as the administrator.

Steps to Install McAfee Total Protection for Endpoint


1. Go to https://downloads.gsu.edu/mcafee/mcafee_for_ga_state_computers.exe and download the Windows version of McAfee for Georgia State-owned computers.

NOTE: You must use your CampusID and password to access the file.

2. Click "Save" when windows prompts you.

NOTE: If you are using Windows XP, proceed to step 3, and if you are using Windows Vista or Windows 7, proceed to step 4.

3. Click "Save" in the Save As dialog box, and click "Open Folder" in the *Download complete* dialog box.

4. Locate the downloaded file and double-click the file, "mcafee_for_ga_state_computers.exe", to begin the installation.  mcafee_for_ga_state_computers

NOTE: The file will have _v and a version number (e.g., mcafee_for_ga_state_v1.exe). This number will vary, depending on the latest version.

5. Please read the *WinZip Self-Extractor* Dialog box and click “OK” when you are finished.
6. Click “OK” in the *McAfee Agent* dialog box when the McAfee Agent setup is complete.
At this point, the McAfee agent is installed on your machine. In the background, the agent will install your anti-virus and anti-spyware software. **Installation of the software suite is not yet complete at this point.**

NOTE: Please leave the cmd.exe windows open. It will close on its own. The installation process takes considerable time (up to an hour or more). However, you may continue with other work on the computer while the installation removes Symantec AntiVirus and installs McAfee software.

After Installation

After installation, the McAfee icon will appear in the system tray, located in the lower right-hand corner of your desktop.



Figure 1: McAfee System Tray Icon

Within 5-10 minutes of the icon appearing, the McAfee server will start updating the McAfee Anti-Virus and Anti-Spyware software. During this update, McAfee uninstalls Symantec Anti-Virus.

NOTE: If you right-click on the McAfee system tray icon (see figure 1) and notice the “Scan Computer for” and “Managed Features” are grayed out, then McAfee is still installing these features. Please be patient. It may take up to an hour or more for the install to complete.

*NOTE: McAfee will not remove any other security software on the computer. The computer **will not reboot** at any time during this process.*

At this time, we recommend you perform a system scan and schedule a weekly scan for threats that might be on your machine.

Steps to Perform a System Scan

1. Right-click the McAfee system tray icon (see Figure 1, above).
2. Select “Scan Computer for” and click on “Threats.”

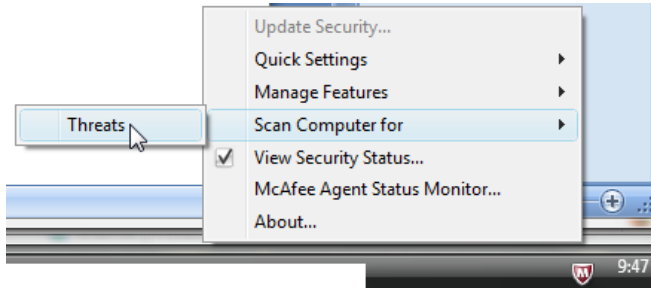


Figure 2: Start a McAfee Virus Scan

3. In the On-Demand Scan Properties dialog box that opens, click “Start.”
NOTE: A scan can take up to an hour or more, depending on the setup of your individual computer.

Steps to Create a Scheduled Scan

1. Right-click the McAfee system tray icon (see Figure 1).
2. Select “Managed Features” and click on “VirusScan Enterprise.”
3. Double-click “Full Scan.”
4. Click “Schedule.”
5. Click “Enable” under the Tasks tabs in the *Schedule Settings* dialog box.
6. Click the “Schedule” tab and choose when to run the scheduled scan.
7. After you’ve chosen your schedule, click “Apply,” then “OK.”
8. Click “OK” in the *On-Demand Scan Properties* dialog box.

Other McAfee Tasks

If you wish to monitor McAfee’s activity, then click on the McAfee system tray icon (see Figure 1, above) and select “McAfee Agent Status Monitor...” to view activity.

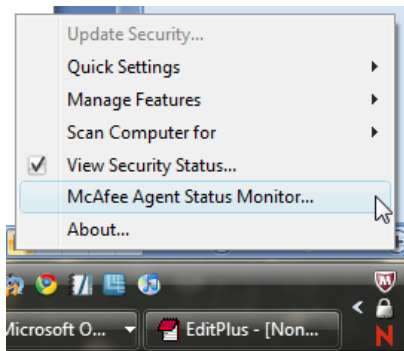


Figure 3: McAfee Icon's Right-Click Menu

You may monitor McAfee's installation status by selecting the "Manage Features" option in the McAfee system tray icon's menu and clicking on "VirusScan Enterprise". This will open the VirusScan console.

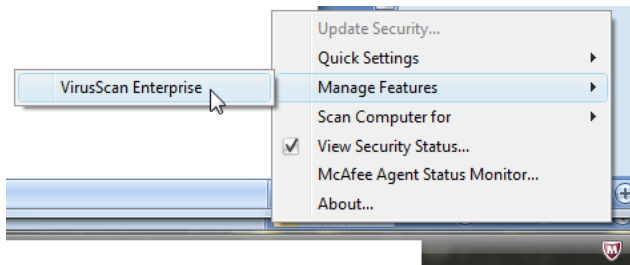


Figure 4: VirusScan Enterprise will open McAfee's Console

Help

If you have questions or need assistance, please contact the Help Center at 404-413-HELP (4357) or e-mail the Help Center at help@gsu.edu.

Appendix

The following is a list of common anti-virus software that McAfee will automatically uninstall for you during the installation process.

ATT_Yahoo!_Applications	eScan Corporate for Windows
CA eTrust Antivirus	Norton AntiVirus 2000
CA eTrust InoculateIT	Norton AntiVirus 2001
CA eTrust Antivirus 7.1	Norton AntiVirus 2002
CA eTrustITM Agent 8.0	Norton AntiVirus 2003
CA eTrustITM Agent 8.1	Norton AntiVirus 2004
CA eTrustITM Agent	Norton AntiVirus 2004 Professional
CA eTrustITM Agent 8.1 on 64-bit environment	Norton AntiVirus 2005
CA iTechnology iGateway	Norton AntiVirus 2006
CA iTechnology iGateway on 64-bit environment	Norton AntiVirus 2007
	Norton AntiVirus 2008
F-Secure Anti-Virus 5.4x	
F-Secure Anti-Virus 5.4	Norton Internet Security
F-Secure Anti-Virus NT Server 5.4x	Norton Internet Security Professional
F-Secure Anti-Virus 5.5x	Norton Internet Security 2005
F-Secure Anti-Virus Client 6.0	Norton Internet Security 2006
F-Secure Anti-Virus 2005	Norton Internet Security 2007
F-Secure Anti-Virus 2006	Norton Internet Security 2008
F-Secure Anti-Virus 2007	Norton Internet Security 2007 for AT&T Yahoo
F-Secure Anti-Virus 2008	
F-Secure Anti-Virus Client Security - Virus Protection	Norton AntiVirus 5.0 For Windows
F-Secure Anti-Virus Client Security - Virus & Spy Protection	Norton AntiVirus 5.0 For Windows for 9X and NT
F-Secure Anti-Virus for Windows Servers	Norton AntiVirus Corporate Edition 7.5 for Windows 9X/NT
F-Secure Internet Security 2005	Norton AntiVirus Corporate Edition 7.X for Windows 9X/NT
F-Secure Internet Security 2006	Norton AntiVirus Corporate Edition 7.0 for Windows NT
F-Secure Internet Security 2007/2008	Norton AntiVirus Corporate Edition Full version 7.0
Kaspersky Anti-Virus 6.0	
Kaspersky Anti-Virus 7.0	Norton AntiVirus 8.X Client
Kaspersky Internet Security 6.0	Norton AntiVirus 8.X for Windows NT
Kaspersky Internet Security 7.0	Norton AntiVirus 8.X Server
	Norton AntiVirus 8.X for Windows NT
Microsoft Windows Defender	
Microsoft Windows 2003 Firewall	Norton Mobile Update Distribution Console
	Norton Rescue Disk
MicroWorld eScan Anti-Virus (AV) for Windows	
MicroWorld eScan Corporate for Windows	Panda AdminSecure

Installing McAfee on Georgia State- Owned Computers with Windows

Panda AdminSecure 2006	Symantec Endpoint Protection Manager
Panda AdminSecure Reports Component	Symantec Endpoint Protection 11.0.780.x
Panda EnterpriseSecure Antivirus 2004	Symantec Endpoint Protection x64
Panda Antivirus 2007	Trend PC-cillin 2000 for 9X
Panda Antivirus 2008 x64	Trend PC-cillin 2000
Panda Antivirus 2008	Trend PC-cillin/VirusBuster 2003
Panda Antivirus 6.0 Platinum	Trend PC-cillin Internet Security 2004
Panda Antivirus Titanium	Trend PC-cillin Internet Security 2005
Panda Antivirus Titanium 2004	Trend PC-cillin Internet Security 2006
Panda Antivirus Platinum 2004	Trend PC-cillin Internet Security 2007
Panda Antivirus Titanium 2005	
Panda Antivirus Titanium 2006	Trend ServerProtect 4.8
	Trend ServerProtect 5.X
Panda Internet Security 2007	
Panda Internet Security 2008	Trend Micro AntiVirus 2008
Panda Internet Security 2006 Platinum	Trend Micro Internet Security 2008
PC-cillin 2002 for 2K,NT,XP and VirusBuster 2001, 2002	Trend Office Scan
PC-cillin 2002/VirusBuster	Trend Office Scan 3.51
PC-cillin 2000 for NT	Trend Office Scan95 3.51
	Trend Office Scan 5.x
Sophos Anti-Virus version 3.X	Trend Office Scan 6.5
Sophos Anti-Virus version 4.X	Trend Office Scan 7.0
Sophos Anti-Virus version 5.X	Trend Office Scan 7.3
Sophos Anti-Virus version 6.X	
Sophos Anti-Virus version 7.X	Trend Micro OfficeScan Client
Sophos Remote Update	Trend Micro OfficeScan Corporate Edition 5.x
	Trend Micro OfficeScan Corporate Edition 6.5
Symantec AntiVirus Client	Trend Micro OfficeScan Corporate Edition 7.0
Symantec AntiVirus Client 1.0	Trend Micro OfficeScan Corporate Edition 7.3
Symantec AntiVirus Corporate Edition 9.0.5 and later.	Trend Micro OfficeScan Client 8.0
Symantec AntiVirus Corporate Edition Win64 10.x and later.	
	Trend Micro Internet Security
	Trend Micro Internet Security 2005
Symantec Client Security Server 3.1	
Symantec Client Firewall Administrator	V3PRO 2002 Deluxe
Symantec Client Firewall	V3NET Server
Symantec Client Security 3.x	V3Net for Windows Server
Symantec Client Security	Smart Update Utility
Symantec Client Security 3.1	V3Pro 2002 Deluxe
	V3Pro 2004
	AhnLab V3 Internet Security 2007 Platinum