

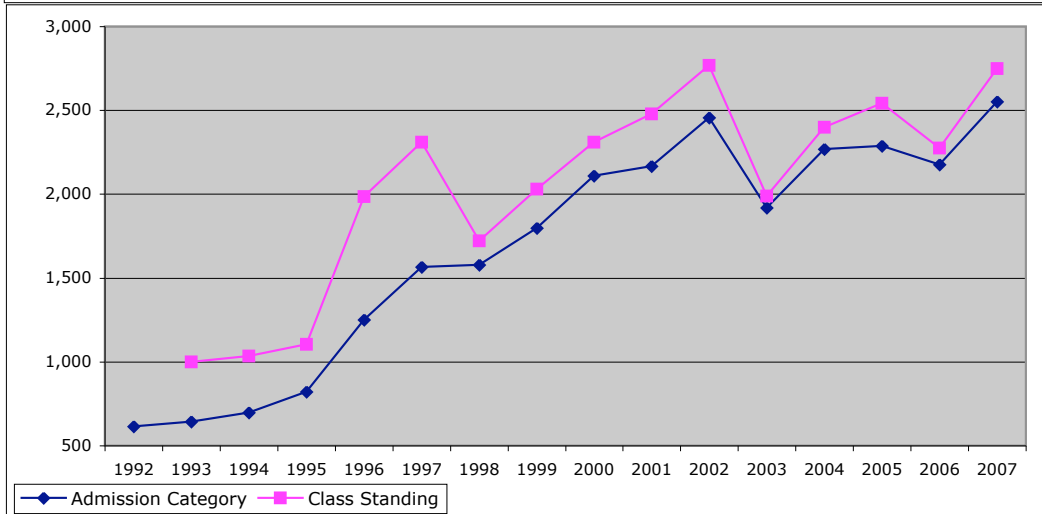
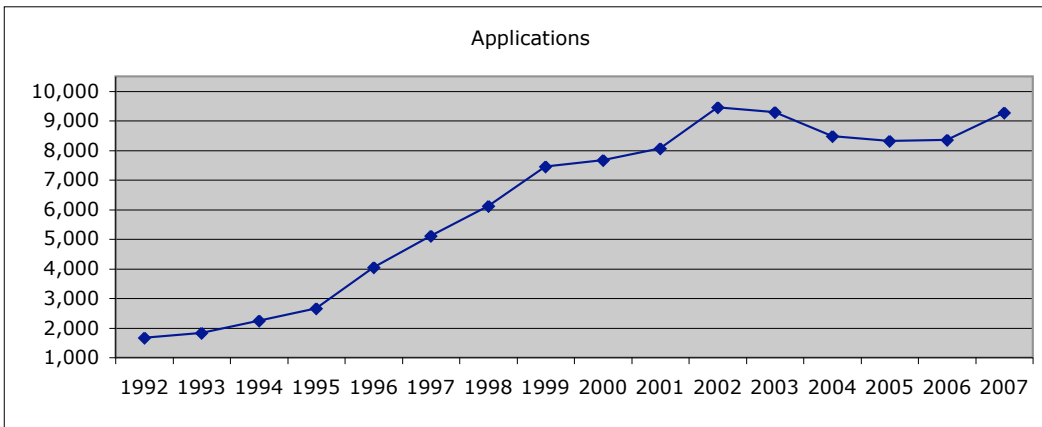
# Georgia State University Freshmen Applicants Fall 1992-2007

Term	Applied	Accepted	%	Enrolled by Adm cat	Yield	Enrolled class std	Admit --> Enrolled
1992	1,673	1,060	63%	616	58%		
1993	1,824	1,128	62%	644	57%	999	55%
1994	2,247	1,279	57%	698	55%	1,033	48%
1995	2,665	1,626	61%	821	50%	1,105	35%
1996	4,049	2,350	58%	1,252	53%	1,985	59%
1997	5,113	3,127	61%	1,564	50%	2,310	48%
1998	6,125	3,302	54%	1,578	48%	1,721	9%
1999	7,462	3,984	53%	1,798	45%	2,031	13%
2000	7,667	4,551	59%	2,110	46%	2,309	9%
2001	8,062	4,334	54%	2,168	50%	2,479	14%
2002	9,454	5,281	56%	2,455	46%	2,769	13%
2003	9,301	4,578	49%	1,917	42%	1,989	4%
2004	8,481	4,775	56%	2,270	48%	2,400	6%
2005	8,317	5,150	62%	2,288	44%	2,543	11%
2006	8,346	4,370	52%	2,177	50%	2,276	5%
<b>2007</b>	<b>9,267</b>	<b>5,033</b>	<b>54%</b>	<b>2,552</b>	<b>51%</b>	<b>2,750</b>	<b>8%</b>

Fr.  
trans.

355  
335  
284  
733  
746  
143  
233  
199  
311  
314  
72  
130  
255  
99  
198

2007 target	9,090	5,000	55%	2,500	50%	2,600	4%
2008 target	10,565	5,599	53%	2,800	50%	2,900	4%
2009 target	11,320	6,000	53%	3,000	50%	3,100	3%
2010 target	11,320	6,000	53%	3,000	50%	3,100	3%



Application Benchmark Dates: 25% - Dec 5; 50% Jan 18; 75% Feb 18; 99% April 4