

Georgia State University
Enrollment By Fiscal Year 1998-2008

2/20/08

FY 1998 FY 1999 FY 2000 FY 2001 FY 2002 FY 2003 FY 2004 FY 2005 FY 2006 FY 2007 FY 2008 07-->08

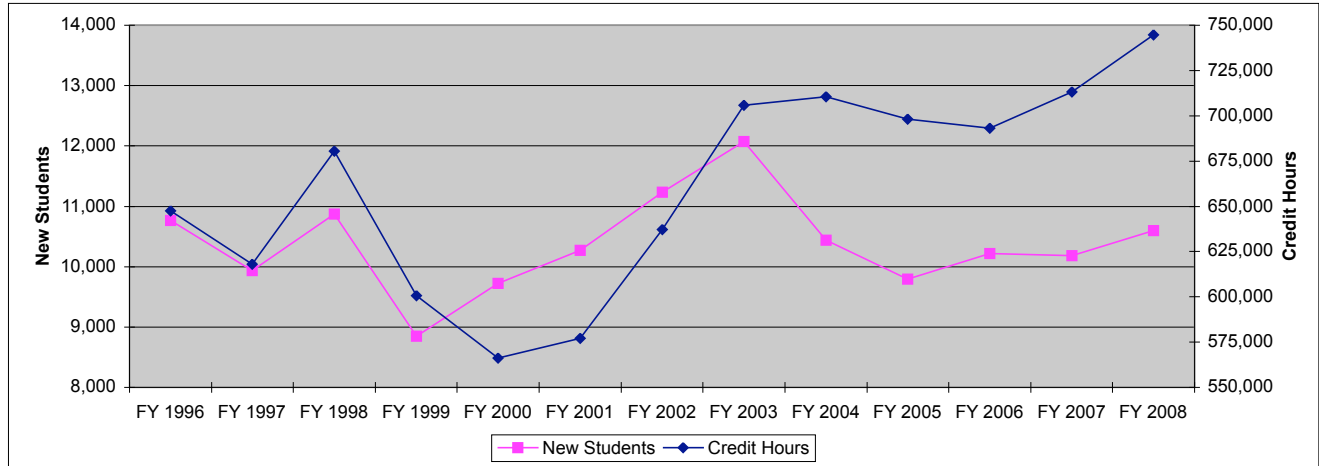
I. New Students (by class standing)

Fresh	3,061	2,243	2,575	2,836	3,022	3,310	2,471	2,850	2,971	2,703	3,158	455
So, Jr, Sr	2,987	2,483	2,591	2,724	3,087	3,476	3,164	2,775	3,017	3,395	3,344	(51)
non deg.-undergrad*	1,415	1,213	1,410	1,419	1,694	1,881	1,634	1,494	1,499	1,251	1,172	(79)
non deg.-grad	512	333	363	514	421	460	416	239	293	323	347	24
Grad.	2,671	2,369	2,590	2,575	2,773	2,702	2,524	2,186	2,180	2,205	2,300	95
Prof	225	209	195	203	237	241	232	248	254	309	278	(31)
Total New	10,871	8,850	9,724	10,271	11,234	12,070	10,441	9,792	10,214	10,186	10,599	413

* non deg.-undergrad includes: Joint enrollment, Transient, Post-Bac., non-matriculated auditor

II. Credit Hours by Faculty College

AS	372,339	334,193	318,289	329,566	372,103	420,441	420,900	416,962	411,899	424,884	445,544	20,660
RCB	153,450	137,277	126,694	122,887	128,647	134,556	130,930	122,127	120,084	126,537	133,234	6,697
COE	81,662	62,389	54,499	53,685	57,643	62,635	65,677	63,446	62,417	61,470	63,983	2,513
CHHS	28,780	26,451	25,660	26,899	28,727	33,672	39,369	42,431	44,866	47,736	50,057	2,321
AYSPS	27,196	22,672	24,162	25,647	30,049	33,487	32,638	31,740	31,421	31,104	31,779	675
LAW	17,115	17,501	16,080	15,738	17,344	18,322	18,498	18,451	18,674	18,696	17,984	(712)
UNIV**	5	163	813	2,721	2,744	2,789	2,637	3,095	3,843	2,718	2,231	(487)
TOTAL	680,547	600,646	566,197	577,142	637,257	705,902	710,649	698,252	693,204	713,145	744,812	31,667



Fiscal Year (FY) = Summer through Spring: (e.g., FY 06 includes: Su 2005, F 2005, and Sp 2006)
 Data Source: Statware Screen 7200 (127 & 130)

** UNIV includes hours taught by library, counseling center, & student services

Note: New students on this chart are defined as students who are both new to that level (graduate or undergraduate) and new to the university. A student changing from a masters program in one college or department to another college would not be considered a new student under this classification. This is the system (BoR) definition of new students. For workload involving the number of applications processed by each unit please refer to Screen 3620.