

Compromised System Procedure

Policy | Standard | Procedure | Informative

Version: 3.0

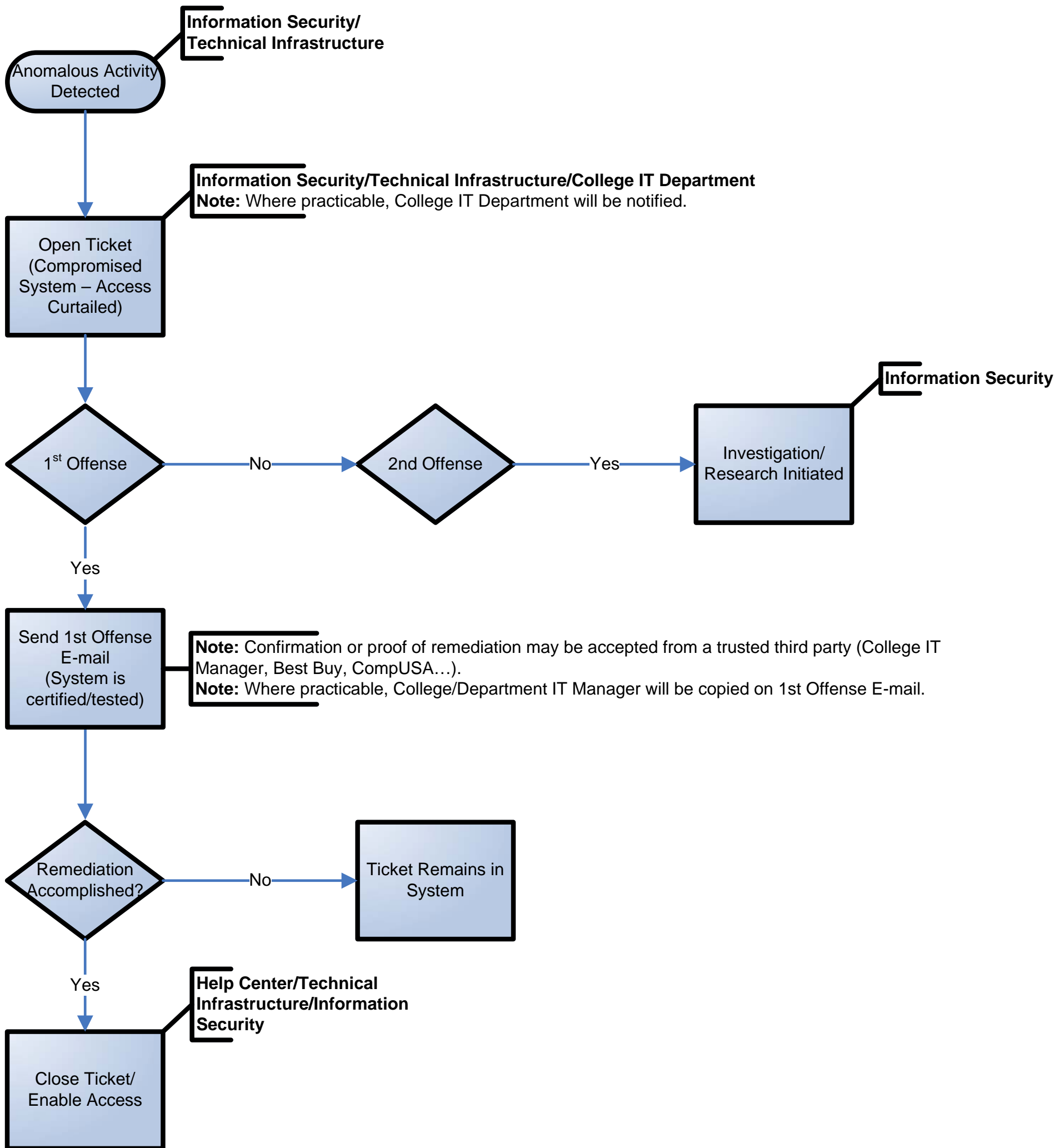
Last Updated: 13FEB09

Approved By: Ms. Tammy Clark (Information Security Officer)

University Information Security Department

Steps for responding to an Information Security Incident.

Compromised System Process



Help: If you have questions, or need assistance, please contact Information Security (security@gsu.edu) or the Help Center (404-413-4527, help@gsu.edu).